



DAVID Y. IGE
GOVERNOR

HAWAI'I COVID-19 JOINT INFORMATION CENTER
DAILY NEWS DIGEST
June 17, 2020

Governor's Office:

Governor, County Mayors to Answer Questions on Facebook Live

Gov. Ige and all four county mayors will once again participate in a Facebook Live to answer questions about the latest on COVID-19. It's part of a "Community Connection" that the governor has hosted on his Facebook page with numerous leaders across the state during the pandemic. The last time the governor and all four mayors went live together was on May 28, where they discussed what residents could expect in the coming weeks and months as businesses slowly started to reopen. Thursday's live will begin at 2 p.m., and anyone is free to post questions in the comments section. To watch the livestream:

<https://www.facebook.com/GovernorDavidIge/>

Department of Health:

Five New COVID-19 Cases

DOH reports a total of five (5) additional cases of COVID-19, with four on O'ahu and the fifth on Hawai'i Island. All of the cases are adults. A third case at the Hale Nani skilled nursing facility is a resident who was identified through ongoing testing and investigation. Two other O'ahu cases are from household contacts in two separate households, with previously confirmed cases.

Hawai'i COVID-19 Counts as of 12:00 noon, June 17, 2020

Island of Diagnosis	New Cases	Reported since 2/28/2020 (including new cases)	Total Released from Isolation*
O'ahu	4	508**	425
Hawai'i	1	83	81
Maui	0	118	111
Kaua'i	0	21	20
Moloka'i	0	2	2
Lana'i	0	0	0
Residents Diagnosed outside HI	0	12	
Unknown	0	0	
Total	5	744**	
Total released from isolation			639
Deaths	0	17	

* Includes cases that meet isolation release criteria.

** One case was removed after follow-up testing.

Laboratory* Testing Data

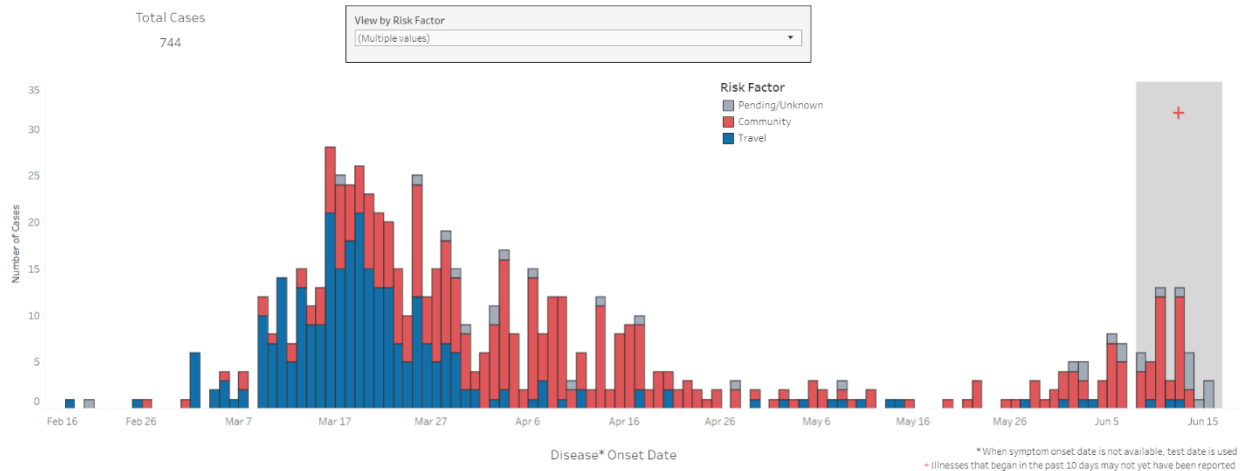
There were 1,131 additional COVID-19 tests reported via electronic laboratory reporting.

Total Number of Individuals Tested by Clinical and State Laboratories	Positive	Negative
64,374**	742	63,618

*Electronic Laboratory Reporting **14 test results were inconclusive

HawaiiCOVID19.com

COVID-19 Epidemic Curve, Hawaii 2020 (Updated June 17, 2020)



For more tables, charts and visualizations visit the new dashboard from the DOH Disease Outbreak Control Division: <https://health.hawaii.gov/coronavirusdisease2019/what-you-should-know/current-situation-in-hawaii/>

Hawai'i Tourism Authority:

1,671 Passengers Arrive on Tuesday

Yesterday, a total of 1,671 people arrived in Hawai'i including 445 visitors and 556 returning residents. There was a total of 19 arriving flights. This table shows the number of people who arrived by air from out of state yesterday but does not show interisland travel.

AIRPORT ARRIVALS FOR TUESDAY, JUNE 16, 2020

	KONA	MAUI	O'AHU	LĪHU'Ē	TOTAL
Crew	9	11	170		190
Transit		1	113		114
Military			165		165
Exempt			80		80
Relocate to Hawai'i	2	13	106		121
Returning Resident	41	44	471		556
Visitor	37	51	357		445
GRAND TOTAL	89	120	1,462	0	1,671
Flights	2	2	15	0	19

<https://www.hawaiitourismauthority.org/media/4740/061720-passenger-count-press-release.pdf>

Hawai'i State Senate:

Senate COVID-19 Committee Meeting with Attorney General, DOH

The Hawai'i State Senate Special Committee on COVID-19 will hold a meeting Thursday, June 18 at 1 p.m. to discuss legislation drafts with the Attorney General and testing updates with the Department of Health. Attorney General Clare Connors is scheduled to appear at 1 p.m., with DOH Director Dr. Bruce Anderson and State Epidemiologist Dr. Sarah Park at 2 p.m. The State Capitol remains closed to the public, but you can watch the meeting on 'Ōlelo channel 49 or stream it online: <http://olelo.org/49>

Department of the Attorney General:

Kailua Man Arrested for Quarantine Violation After Returning Home

43-year-old Christopher M. Jergovic was arrested by Special Agents with the Dept. of the Attorney General outside his Kailua residence Monday morning. He is the second returning resident to be arrested in as many weeks on charges of violating the state's mandatory traveler quarantine. Witnesses reported seeing Jergovic outside, after he returned from working in Nigeria on June 6. They told investigators they saw him driving away from his residence three times and on another occasion was observed out walking. The witnesses contacted the AG's office. Bail for Jergovic was set at \$2,000.

Department of Land and Natural Resources:

People Returning to The Forest Urged to Use Best Practices

As more and more restrictions on outdoor activities are being lifted, many people are returning to Hawai'i's forests to hike, hunt, and participate in other recreational activities. During the COVID-19 pandemic, additional infections of the fungal disease known as Rapid 'Ōhi'a Death have occurred.

With many natural areas re-opening and yesterday's resumption of interisland travel, DLNR and its partners remind forest users to clean their boots, vehicles and equipment of any dirt and soil and spray with a 70 percent alcohol solution to ensure they are not transporting the fungus which causes ROD. DLNR Chair Suzanne Case said, "With our ability now to visit and hike on neighbor islands, it is more important than ever to remind people that they can accidentally spread diseases and weeds unless precautions are taken. As COVID-19 very effectively demonstrates protecting our way of life and our natural resources in Hawai'i requires everyone's care and participation."

Updated island maps, ROD outreach materials and virtual activities (list of different online events and webinars) are available at www.rapidohiadeath.org

###