



DAVID Y. IGE
GOVERNOR

HAWAI'I COVID-19 JOINT INFORMATION CENTER
DAILY NEWS DIGEST
June 16, 2020

Department of Health:

Four New COVID-19 Cases on O'ahu

Three (3) adults and one (1) person under 18-years of age are the four (4) new COVID-19 cases being reported by DOH. All four cases were diagnosed on O'ahu, but the residency of one case is still under investigation. Two cases involve household contact in separate households.

Hawai'i COVID-19 Counts as of 12:00 noon, June 16, 2020

Island of Diagnosis	New Cases	Reported since 2/28/2020 (including new cases)	Total Released from Isolation*
O'ahu	4	505	423
Hawai'i	0	82	81
Maui	0	118	111
Kaua'i	0	21	20
<i>Moloka'i</i>	0	2	2
<i>Lana'i</i>	0	0	0
Residents Diagnosed outside HI	0	12	
Unknown	0	0	
Total	4	740	
Total released from isolation			637
Deaths	0	17	

* Includes cases that meet isolation release criteria.

Laboratory* Testing Data

There were 1,215 additional COVID-19 tests reported via electronic laboratory reporting.

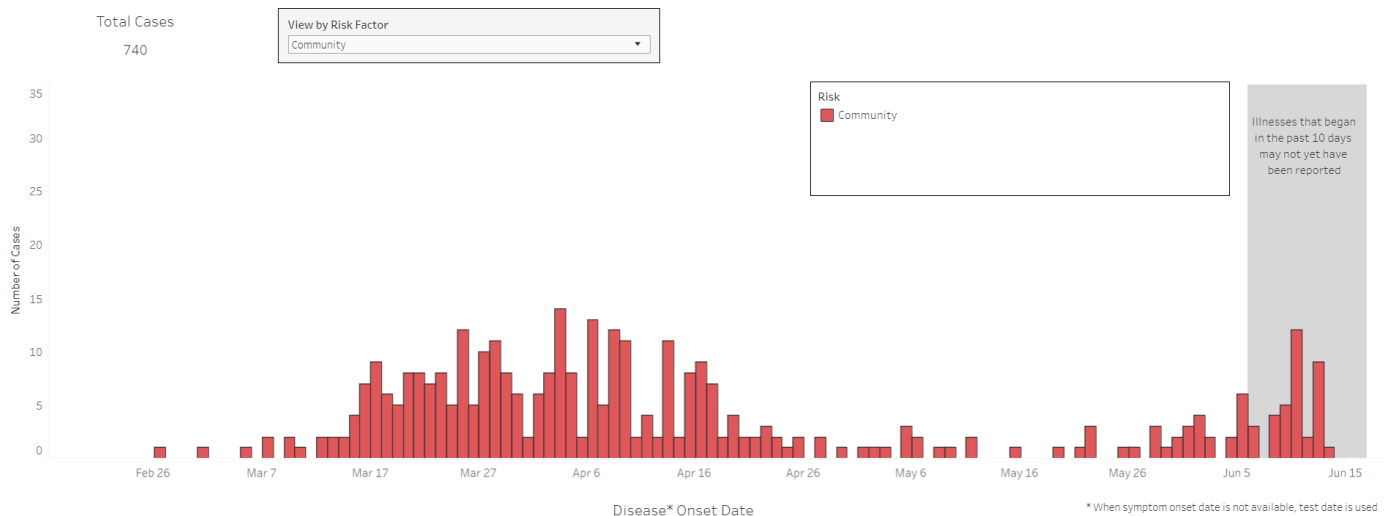
Total Number of Individuals Tested by Clinical and State Laboratories	Positive	Negative
63,243**	738	62,491

*Electronic Laboratory Reporting **14 test results were inconclusive

Hawaiiicovid19.com

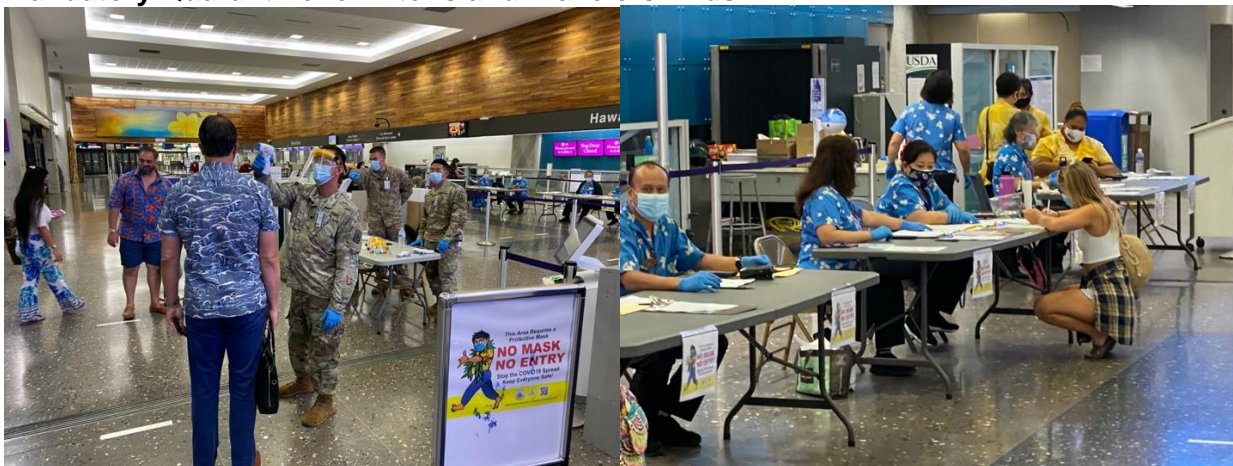
COVID-19 Epidemic Curve, Hawaii 2020

Updated June 16, 2020



For more tables, charts and visualizations visit the new dashboard from the DOH Disease Outbreak Control Division: <https://health.hawaii.gov/coronavirusdisease2019/what-you-should-know/current-situation-in-hawaii/>

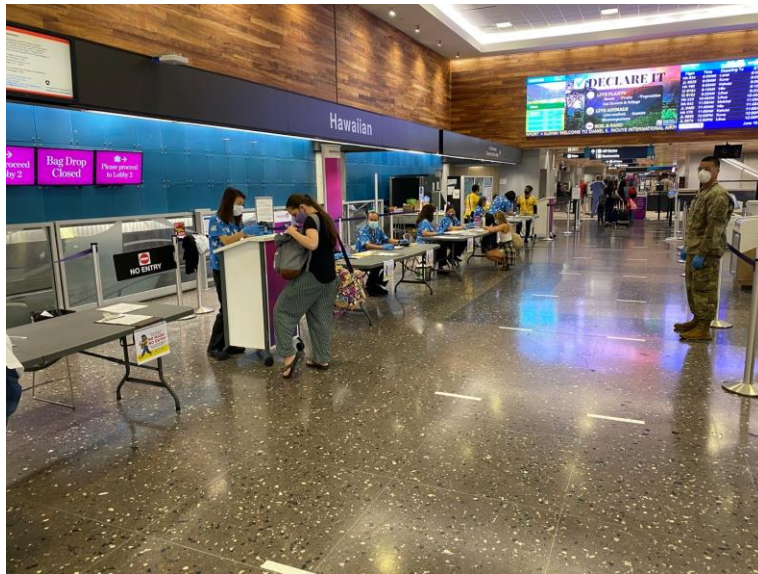
Department of Transportation Mandatory Quarantine for Interisland Travelers Ends



The mandatory 14-day self-quarantine for interisland travelers was lifted today, and things have gone smoothly so far. Departing interisland travelers will continue having their temperature taken and they must complete the new travel and health form prior to each flight. The form includes contact and travel information as well as health related questions. Passengers are encouraged to complete the form within 24 hours of their flight and bring a print-out to the airport. People will have the opportunity to fill out the form at the airport, if they are unable to print the form in advance. The completed form must be submitted before each interisland flight, even if the flights are on the same day. Passengers are encouraged to allow extra time and arrive at the airport with enough time to complete the passenger verification process, pass through the TSA security checkpoint and arrive at their assigned gate prior to departure.

People who have a temperature above 100.4 degrees will not be allowed to fly. Certain other individuals will receive an additional assessment and will have the opportunity to have a nasal swab sample taken at the airport, which will be delivered to an off-site Department of Health (DOH) lab to be tested for COVID-19. Feeling symptomatic (other than a fever) and having the swab sample taken does not necessarily mean the person cannot travel. However, the form will allow DOH to contact the person should their test result be positive. Additional information and the new travel and health interisland form can be found by visiting:

<https://health.hawaii.gov/travel/>



Hawai'i Tourism Authority:

1,769 Passengers Arrive on Monday

Yesterday, a total of 1,769 people arrived in Hawai'i including 397 visitors and 543 returning residents. There was a total of 20 arriving flights. This table shows the number of people who arrived by air from out of state yesterday, but does not show interisland travel.

AIRPORT ARRIVALS FOR MONDAY, JUNE 15, 2020

	KONA	MAUI	O'AHU	LĪHU'Ē	TOTAL
Crew	8	12	183		203
Transit			140		140
Military			232		232
Exempt			143		143
Relocate to Hawai'i		12	99		111
Returning Resident		80	463		543
Visitor	15	36	346		397
GRAND TOTAL	23	140	1,606	0	1,769
Flights	3	2	15	0	20

<https://www.hawaiitourismauthority.org/media/4737/061620-passenger-count-press-release.pdf>

###